



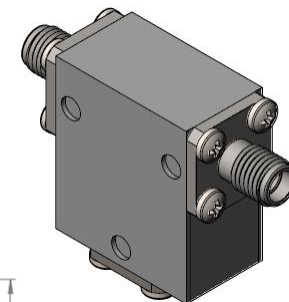
Part Number: D3I7011

Electrical Specifications

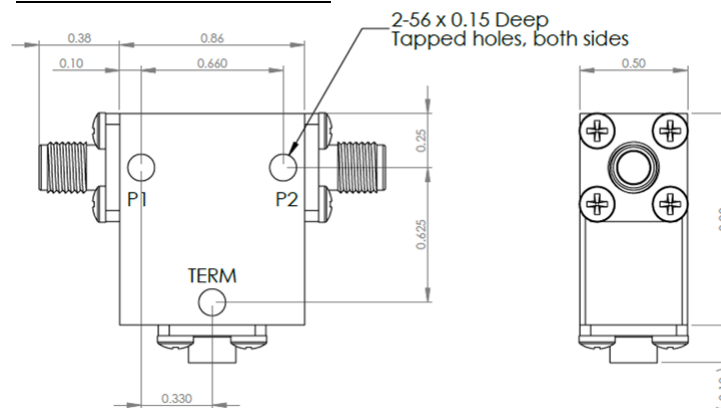
Frequency Range (GHz): 7.0 – 11.0  
 Isolation (dB): 20 MIN  
 Insertion Loss (dB): 0.5 MAX  
 VSWR: 1.25:1 MIN  
 Forward Power (W): 25 AVG  
 500 PK  
 Reflective Power (W): 2 AVG

Mechanical/Environmental Specifications

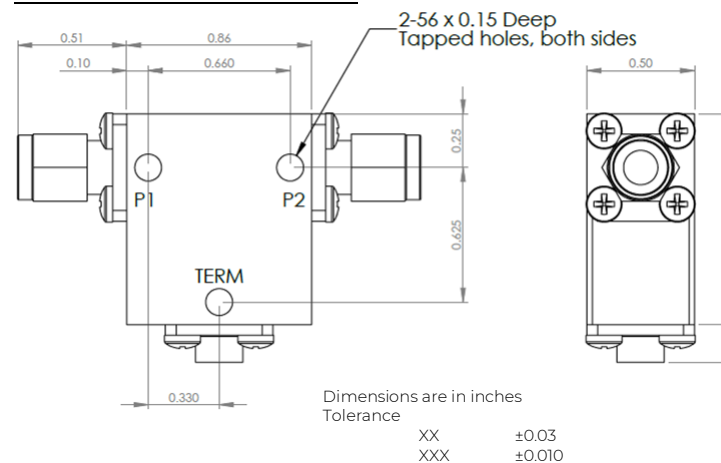
Connector Type: SMA  
 Connector Body: Passivated stainless steel  
 Connector Pin: Gold plated copper  
 Load Body: Brass  
 Magnetic Shunt: Nickel plated CRS  
 Operational Temp: -30°C to +85°C  
 Weight (oz) 1.0 MAX



D3I7011 Dimensions



D3I7011-3 Dimensions



Type of Device	PN Suffix	Connector Configuration Input/Output	PN Example
Single and Dual Junction Isolator, 2-Port Device	N/A	Female / Female	D3I7011
	-1	Male / Female	D3I7011-1
	-2	Female / Male	D3I7011-2
	-3	Male / Male	D3I7011-3



## MEASURED DATA

Part Number: D3I7011, +25°C

