



Part Number: D3C6282YMG-4K

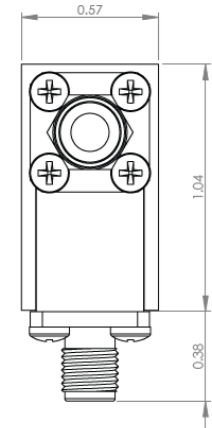
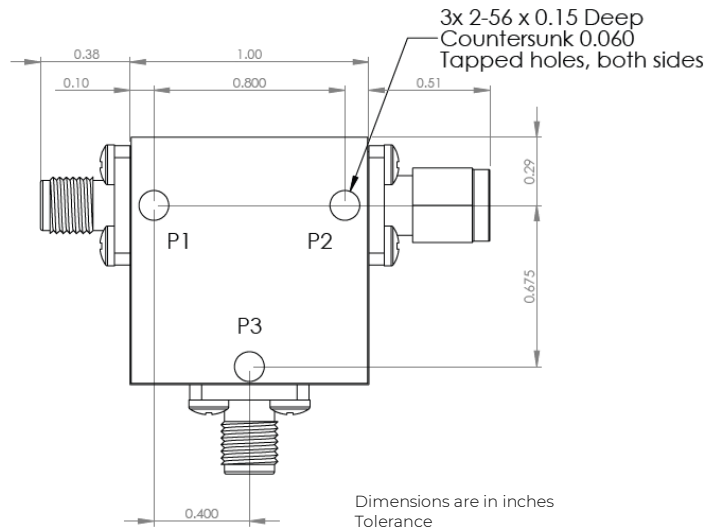
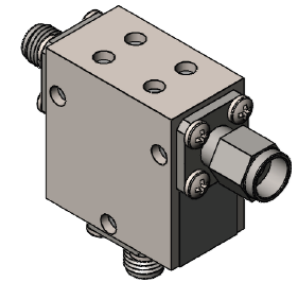
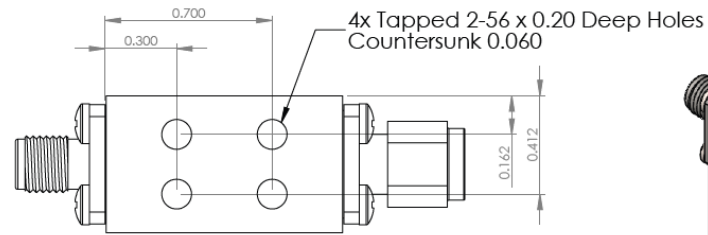
Electrical Specifications

Frequency Range (GHz): 6.2 – 8.2
 Isolation (dB): 28 MIN
 Insertion Loss (dB): 0.3 MAX
 Return Loss (dB): 24 MIN
 Forward Power (W): 20 AVG
 30 PK

Mechanical/Environmental Specifications

Connector Type: SMA
 Connector Body: Passivated stainless steel
 Connector Pin: Gold plated copper
 Magnetic Shunt: Nickel plated CRS
 Magnetically Shielded: Yes
 Optimized Temperature: < 4K
 Weight (oz) 2.0 MAX

D3C6282YMG-4K-2



Dimensions are in inches
 Tolerance XX ±0.03
 XXX ±0.010

Type of Device	PN Suffix	Connector Configuration Port 1 / Port 2 / Port 3	PN Example
Single Junction Circulator 3-Port Device Port 1 / Port 2 / Port 3	No Dash	Female / Female / Female	D3C6282YMG-4K
	-1	Male / Female / Female	D3C6282YMG-4K-1
	-2	Female / Male / Female	D3C6282YMG-4K-2
	-3	Male / Male / Male	D3C6282YMG-4K-3
	-4	Female / Female / Male	D3C6282YMG-4K-4
	-5	Male / Female / Male	D3C6282YMG-4K-5
	-6	Male / Male / Female	D3C6282YMG-4K-6
-7	Female / Male / Male	D3C6282YMG-4K-7	



MEASURED DATA

Part Number: D3C6282YMG-4K, P1→P2, P3 Terminated with 50Ω, Measured at 4K

