



Part Number: D4C8292Y-77K

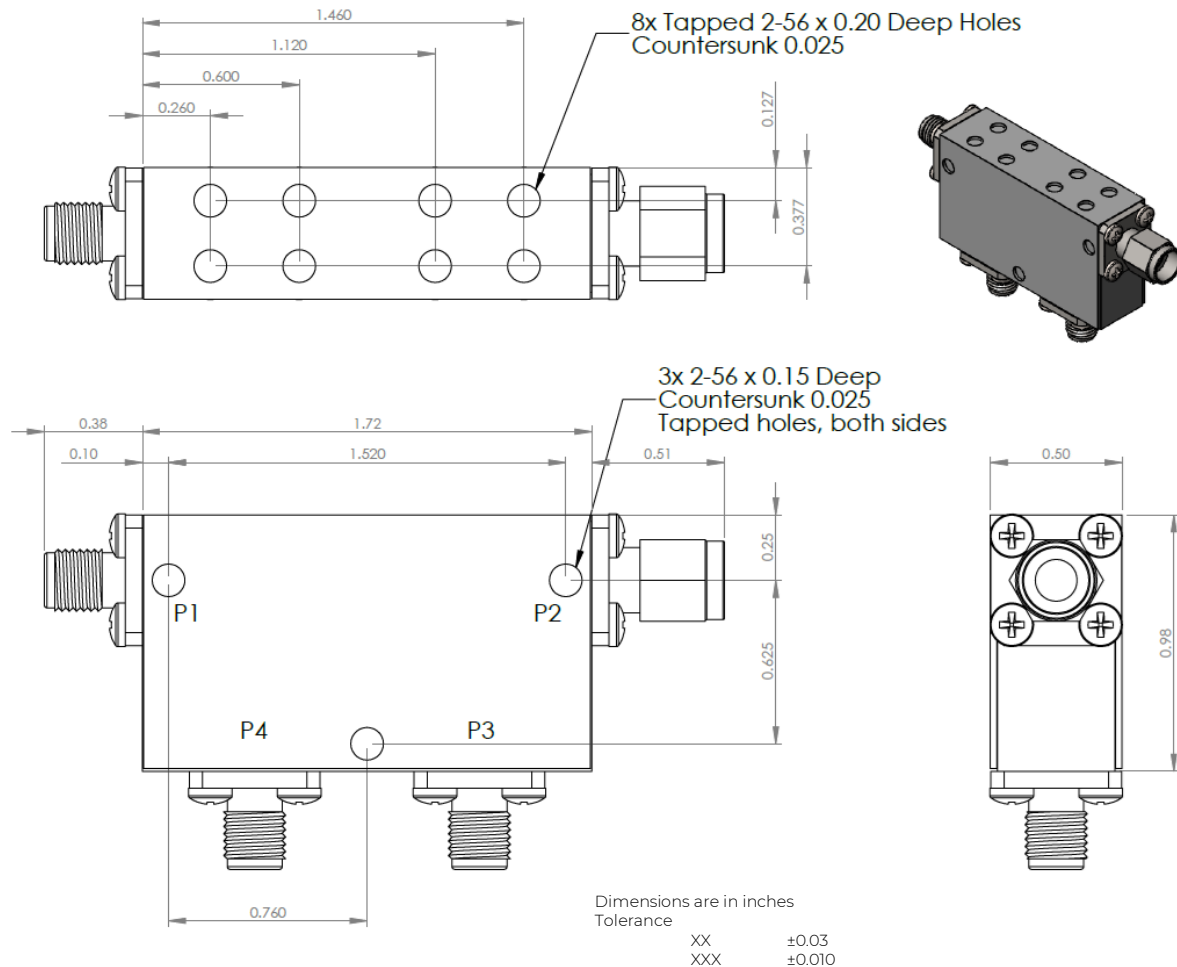
Electrical Specifications

Frequency Range (GHz):	8.2 – 9.2
Isolation (dB):	25 MIN (per junction)
Insertion Loss (dB):	0.2 MAX (per junction)
Return Loss (dB):	25 MIN (per junction)
Forward Power (W):	25 AVG
	500 PK

Mechanical/Environmental Specifications

Connector Type:	SMA
Connector Body:	Passivated stainless steel
Connector Pin:	Gold plated copper
Magnetic Shunt:	Nickel plated CRS
Optimized Temperature:	< 77K
Weight (oz)	4.0 MAX

D4C8292Y-77K-2 Dimensions



Type of Device	PN Suffix	Connector Configuration Port 1 / Port 2 / Port 3 / Port 4	PN Example
Dual Junction Circulator 4-Port Device Port 1 / Port 2 / Port 3 / Port 4	No Dash	Female / Female / Female / Female	D4C8292Y-77K
	-1	Male / Female / Female / Female	D4C8292Y-77K-1
	-2	Female / Male / Female / Female	D4C8292Y-77K-2
	-3	Male / Male / Male / Male	D4C8292Y-77K-3
	-4	Female / Female / Male / Female	D4C8292Y-77K-4
	-5	Female / Female / Female / Male	D4C8292Y-77K-5



MEASURED DATA

Part Number: D4C8292Y-77K, P1→P2, P3 & P4 Terminated with 50Ω, Measured at 77K

