



Part Number: D3C8012YMG

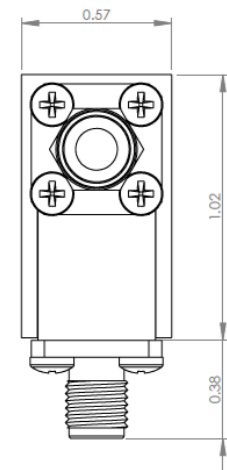
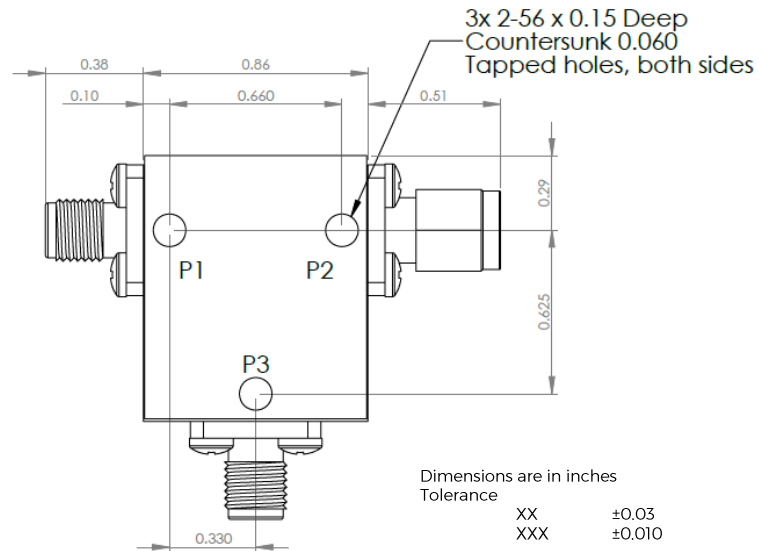
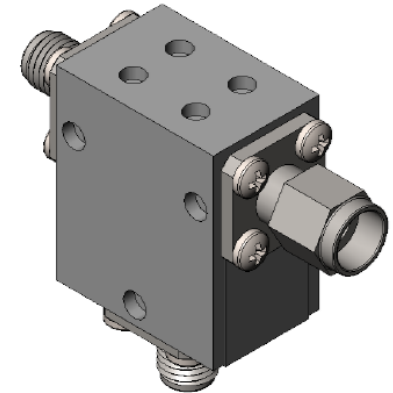
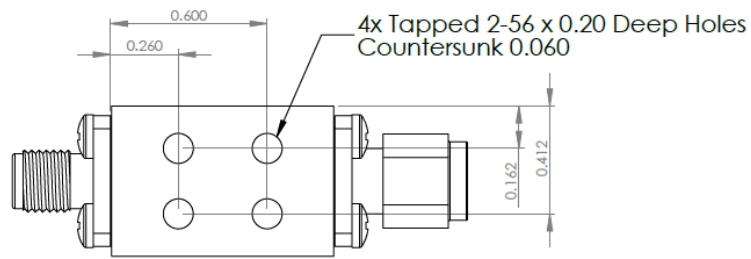
Electrical Specifications

Frequency Range (GHz): 8.0 – 12.0
 Isolation (dB): 20 MIN
 Insertion Loss (dB): 0.5 MAX
 Return Loss (dB): 20 MIN
 Forward Power (W): 25 AVG
 500 PK

Mechanical/Environmental Specifications

Connector Type: SMA
 Connector Body: Passivated stainless steel
 Connector Pin: Gold plated copper
 Load Body: Brass
 Magnetic Shunt: Nickel plated CRS
 Magnetically Shielded: Yes
 Operational Temp: < 77K
 Weight (oz) 1.0 MAX

D3C8012YMG-2 Dimensions



Type of Device	PN Suffix	Connector Configuration Input / Output	PN Example
Single Junction Circulator 3-Port Device Port 1 / Port 2 / Port 3	No Dash	Female / Female / Female	D3C8012YMG
	-1	Male / Female / Female	D3C8012YMG-1
	-2	Female / Male / Female	D3C8012YMG-2
	-3	Male / Male / Male	D3C8012YMG-3
	-4	Female / Female / Male	D3C8012YMG-4
	-5	Male / Female / Male	D3C8012YMG-5
	-6	Male / Male / Female	D3C8012YMG-6
	-7	Female / Male / Male	D3C8012YMG-7



MEASURED DATA

Part Number: D3C8012YMG, P1→P2, P3 Terminated with 50Ω, Measured at 77K

