



**Part Number: D3C4080YMG**

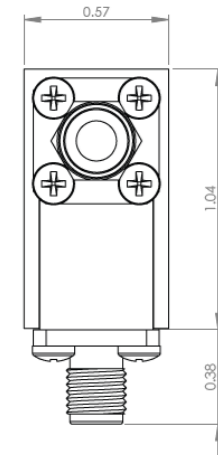
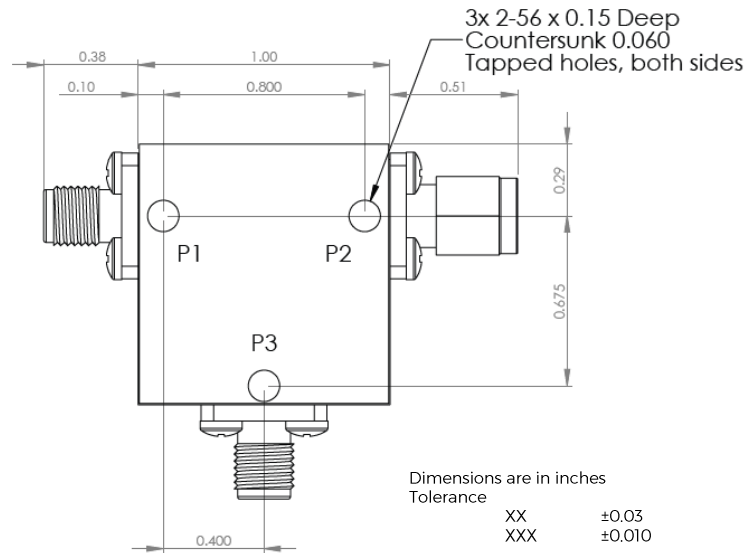
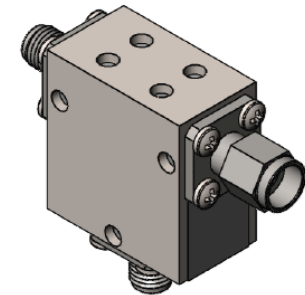
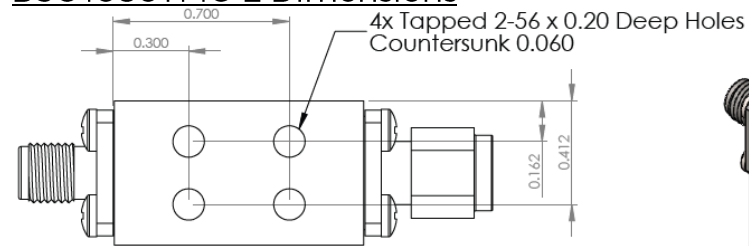
**Electrical Specifications**

Frequency Range (GHz): 4.0 – 8.0  
 Isolation (dB): 16 MIN  
 Insertion Loss (dB): 0.4 MAX  
 Return Loss (dB): 16 MIN  
 Forward Power (W): 20 AVG  
 30 PK

**Mechanical/Environmental Specifications**

Connector Type: SMA  
 Connector Body: Passivated stainless steel  
 Connector Pin: Gold plated copper  
 Load Body: Brass  
 Magnetic Shunt: Nickel plated CRS  
 Magnetically Shielded: Yes  
 Operational Temp: < 77K  
 Weight (oz): 2.0 MAX

**D3C4080YMG-2 Dimensions**



Dimensions are in inches  
 Tolerance  
 XX ±0.03  
 XXX ±0.010

Type of Device	PN Suffix	Connector Configuration Input / Output	PN Example
Single Junction Circulator 3-Port Device Port 1 / Port 2 / Port 3	No Dash	Female / Female / Female	D3C4080YMG
	-1	Male / Female / Female	D3C4080YMG-1
	-2	Female / Male / Female	D3C4080YMG-2
	-3	Male / Male / Male	D3C4080YMG-3
	-4	Female / Female / Male	D3C4080YMG-4
	-5	Male / Female / Male	D3C4080YMG-5
	-6	Male / Male / Female	D3C4080YMG-6
	-7	Female / Male / Male	D3C4080YMG-7



## MEASURED DATA

Part Number: D3C4080YMG, P1→P2, P3 Terminated with 50Ω, Measured at 77K

